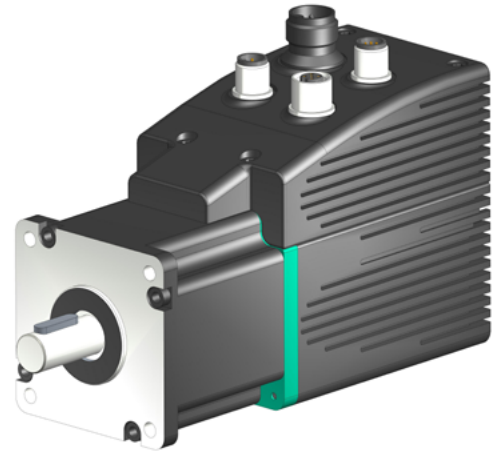


- All-in-one rotary actuator
- Integrated drive and position controller absolute multiturn
- Closed loop position control
- 150 and 250W bldc motors, size 70
- Real absolute multiturn encoder (4096 x 65536)



RD6

ENVIRONMENTAL SPECIFICATIONS

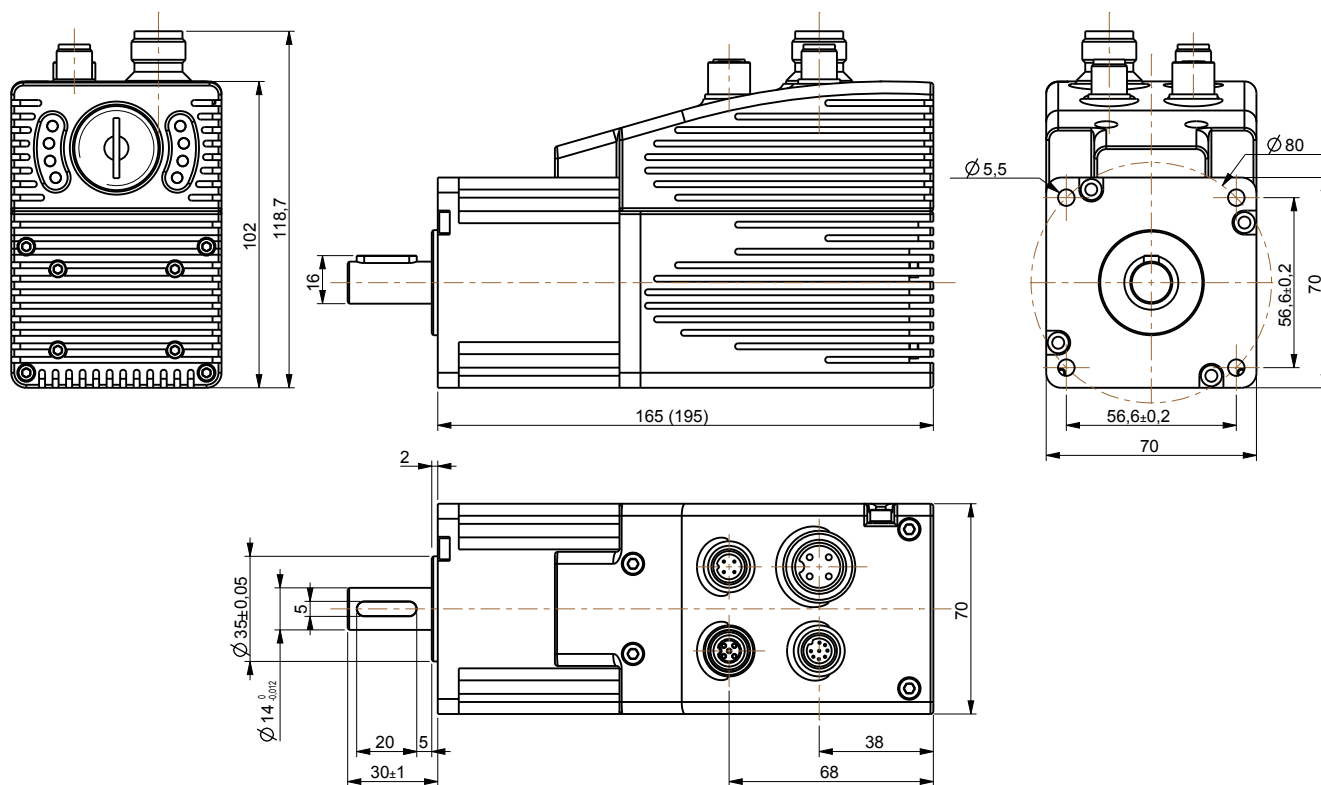
Operating temperature range:	0°C +60°C (32°F +140°F)
Storage temperature range:	-20°C +80°C (-4°F +176°F) (98% R.H. without condensation)
Protection:	IP54

MECHANICAL SPECIFICATIONS

Dimensions:	see drawing
Positioning accuracy:	± 0,9°
Electrical connections:	M12 connectors
Duty cycle:	100% ED
Rated torque:	version 157: 0,5 Nm @ 3000 rpm version 250: 0,8 Nm @ 3000 rpm
Peak torque:	version 157: 1,5 Nm version 250: 2,4 Nm
Weight:	~ 2,2 kg (77,6 oz) with version 157 ~ 3 kg (105,8 oz) with version 250

ELECTRICAL SPECIFICATIONS

Resolution:	4096 inf./rev. x 65536 rev.
Power supply:	+24Vdc ± 10%
Power (motor):	157, 250 W
Input current:	motor 157W: 9 A nom. motor 250W: 15 A nom. control unit: 130 mA max.
Bus Interface:	Profibus-DP, CANopen (DS301), Modbus RTU (RS485) EtherCAT, Powerlink
Service interface:	RS232 (excl. MB)



RD6

Order code

RD6	-	X	-	XXX	-	XX	-	XX	-	X
		Ⓐ		Ⓑ		Ⓒ		Ⓓ		Ⓔ

Ⓐ POWER SUPPLY

P8 = 24Vdc ± 10%

Ⓑ MOTOR VERSION

157 = 157W
250 = 250W

Ⓒ INTERFACE

CB = CANopen (DS301)
PB = Profibus-DP
MB = Modbus RTU (RS485)
EC = EtherCAT
PL = Powerlink

Ⓓ ENCODER

E4 = Absolute, 4096 inf./rev. x 65536 rev.

Ⓔ CONNECTIONS

M = Connector output