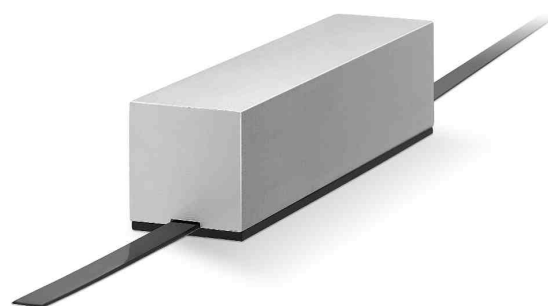
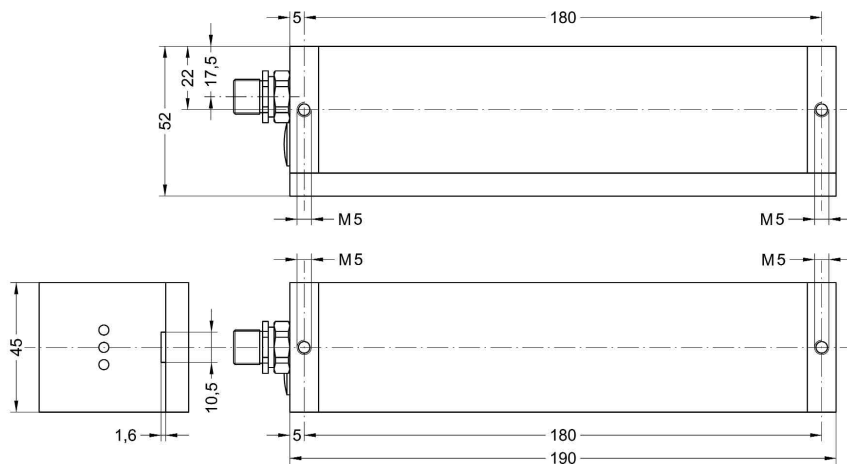


# LINECOD

Absolute magnetic system for elevators

series

SMAL



SMAL

## ENVIRONMENTAL SPECIFICATIONS

Operating temperature range:	-25°C ÷ +85°C (-13°F +185°F)
Storage temperature range:	-25°C ÷ +85°C (-13°F +185°F)
Protection:	IP54

## MECHANICAL SPECIFICATIONS

Dimensions:	see drawing
Connections:	M12 connector
Travel speed:	max. 5 m/s
Resolution:	1 mm
Measurement length:	max. 100 m
	Measurement length = Tape length - 28 cm
Option:	• cable 2 m

## ELECTRICAL SPECIFICATIONS

Power supply:	+10Vdc ÷ +30Vdc
Output circuit:	SSI, RS485, Profibus, CANopen, CANlift
Power consumption:	3,5 W max
Protection:	against inversion of polarity

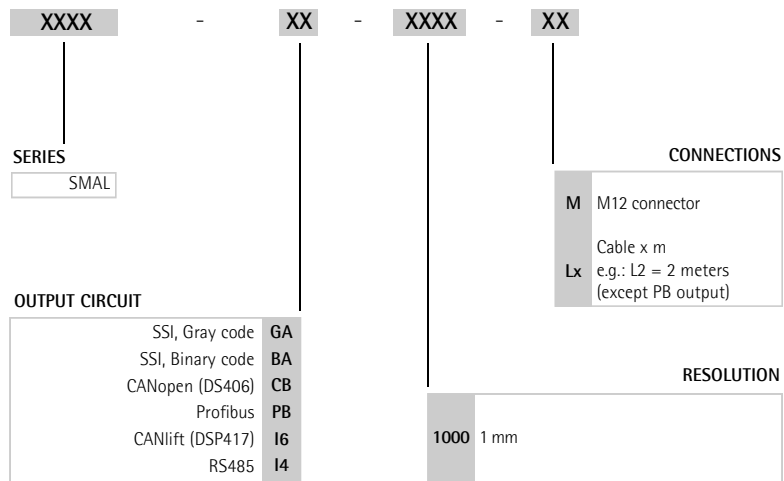
## MATERIALS

Sensor housing:	aluminium
Tape slideway:	derlin
Magnetic tape:	plastoferrite on steel

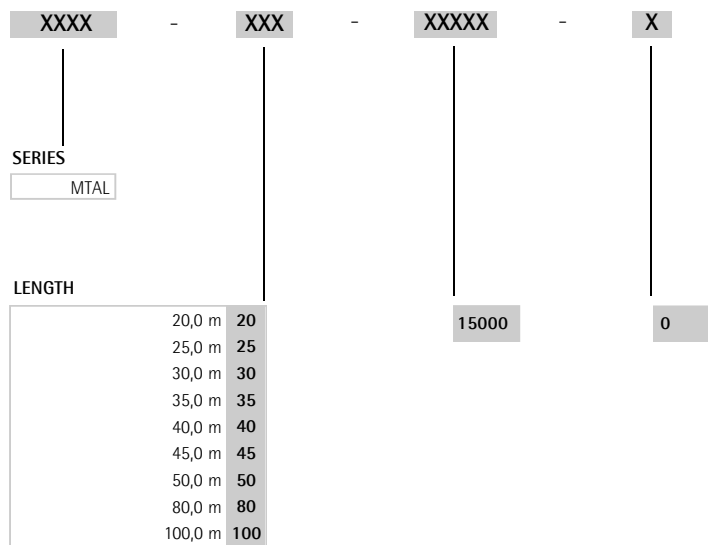


[www.ika.biz](http://www.ika.biz)  
• Data sheet  
• User manual

ORDERING CODE SMAL



ORDERING CODE MTAL



ACCESSORIES SMAL

KIT MTAL:	Tape fixing system
EM12MP:	Male mating connector for Profibus
EM128F:	Female mating connector for SSI
EM12FC:	Female mating connector for CAN, RS485
EC...:	Connection cables on request